

# C 型钢安装指导书

## Safety and Installer Responsibilities



INSTALLATION OF THIS PRODUCT IS TO BE PERFORMED ONLY BY PROFESSIONALLY TRAINED INSTALLERS. Any attempt by an by an unqualified person to install this product could result in death or serious injury.



**WARNING:** indicates a potentially hazardous situation which, if not avoided, could result in death or serious injury. This symbol is not used for hazards relating to property damage unless there is also a risk of personal injury to this level.



**CAUTION:** indicates a potentially hazardous situation which, if not avoided, may result in minor or moderate injury. It may also be used to draw attention to unsafe practices that may cause damage to property.



6mm metric Allen Key or 6mm hexagonal driver bit.



Drill or impact driver for driving roof material fixings.



Measuring tape



Chalk Line Reel



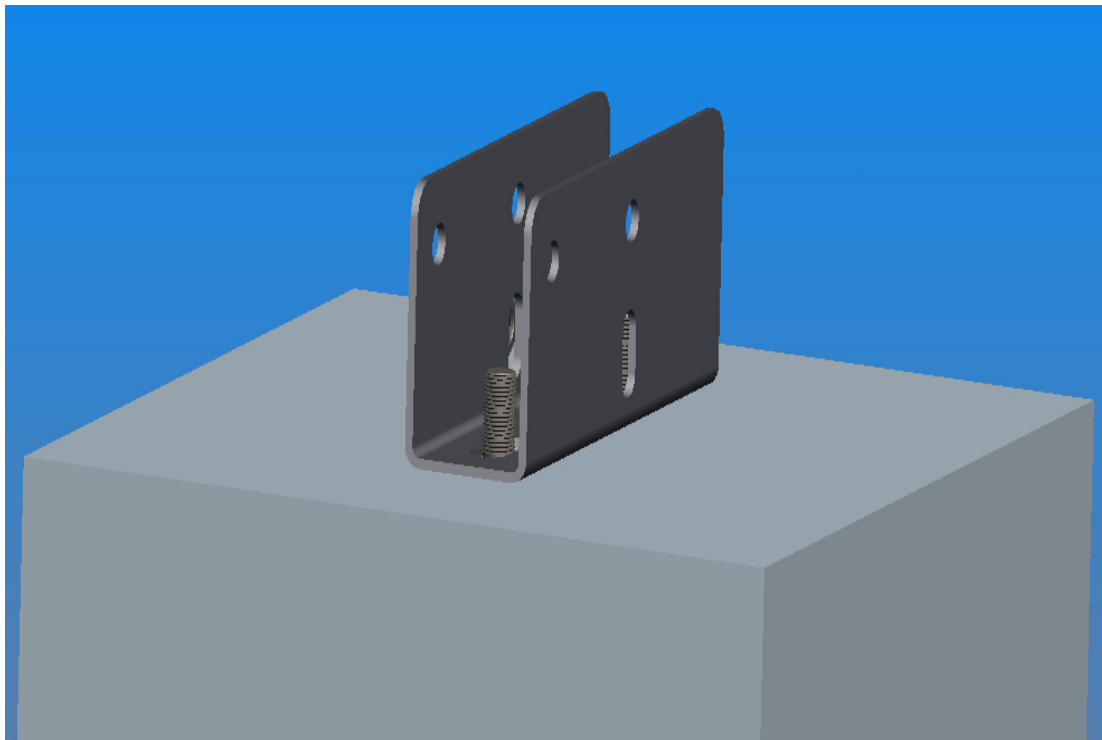
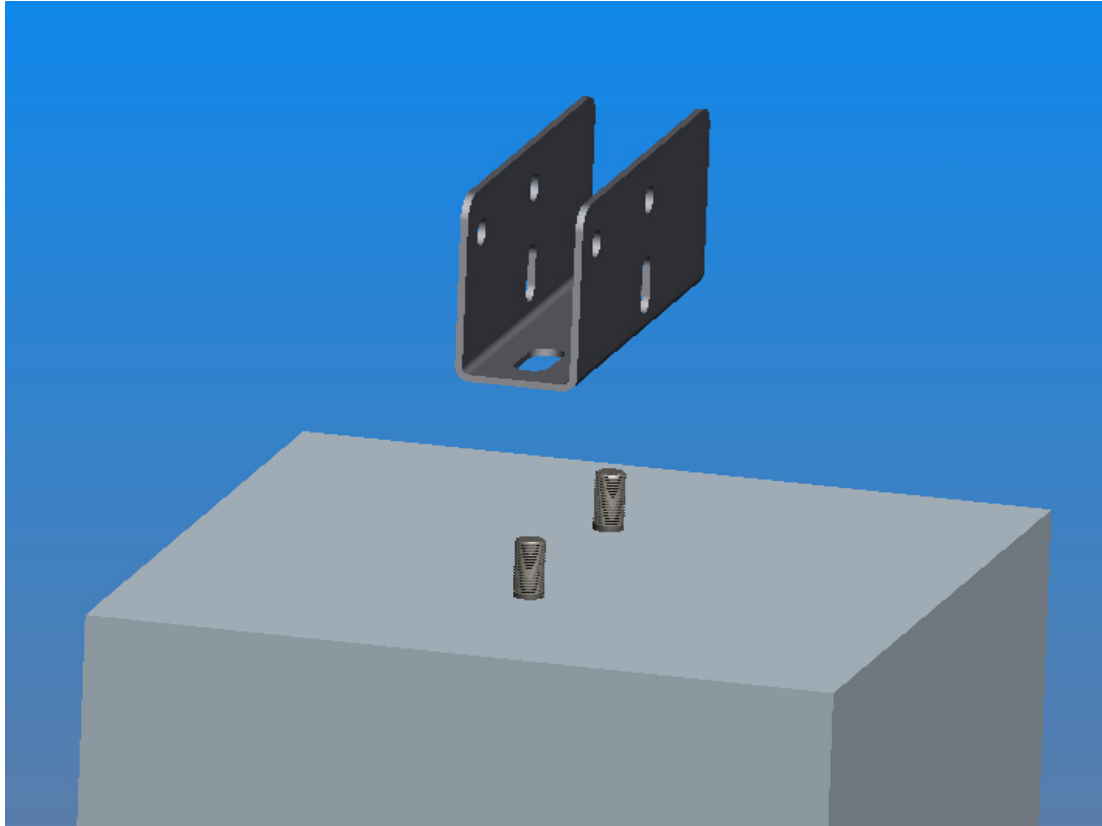
Glove



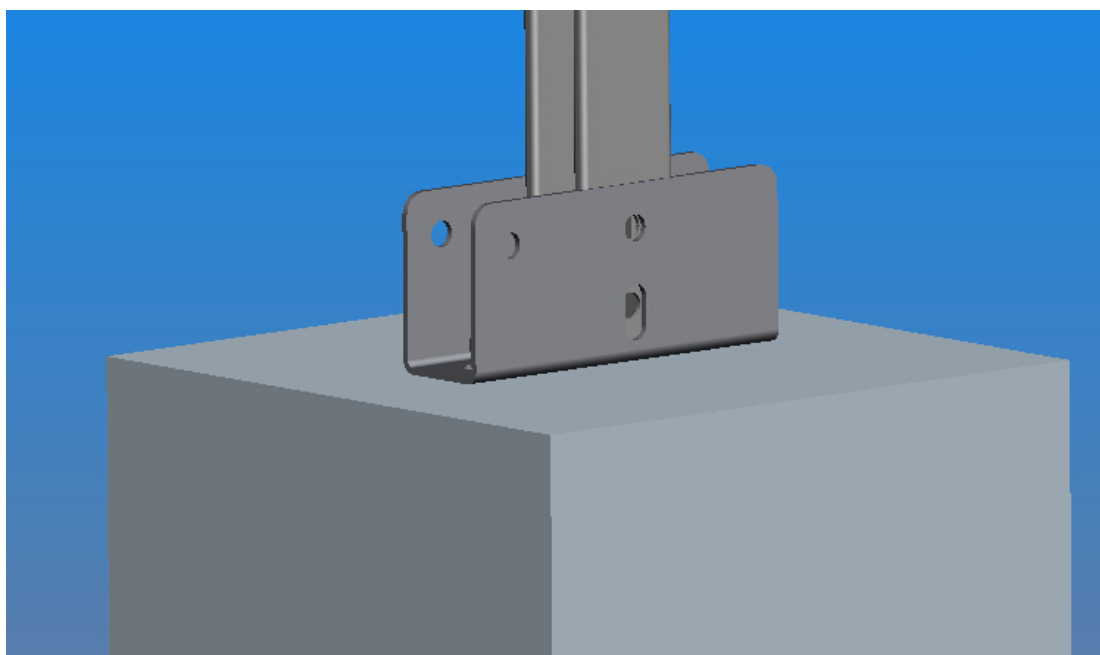
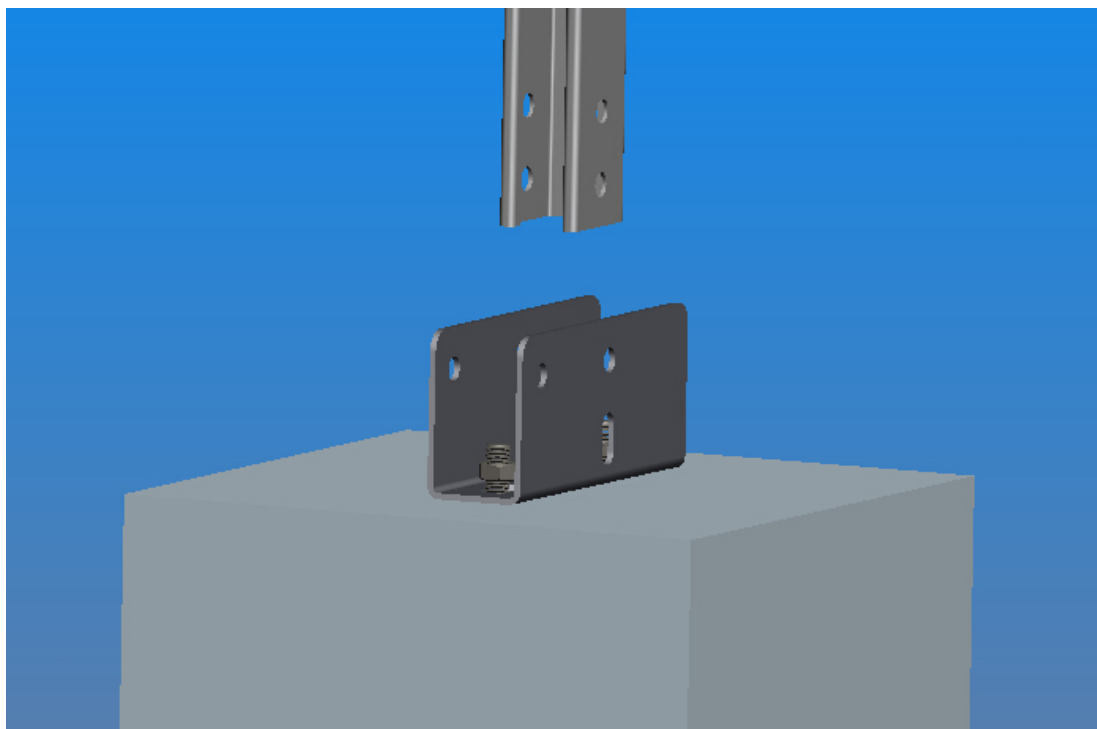
Helmet

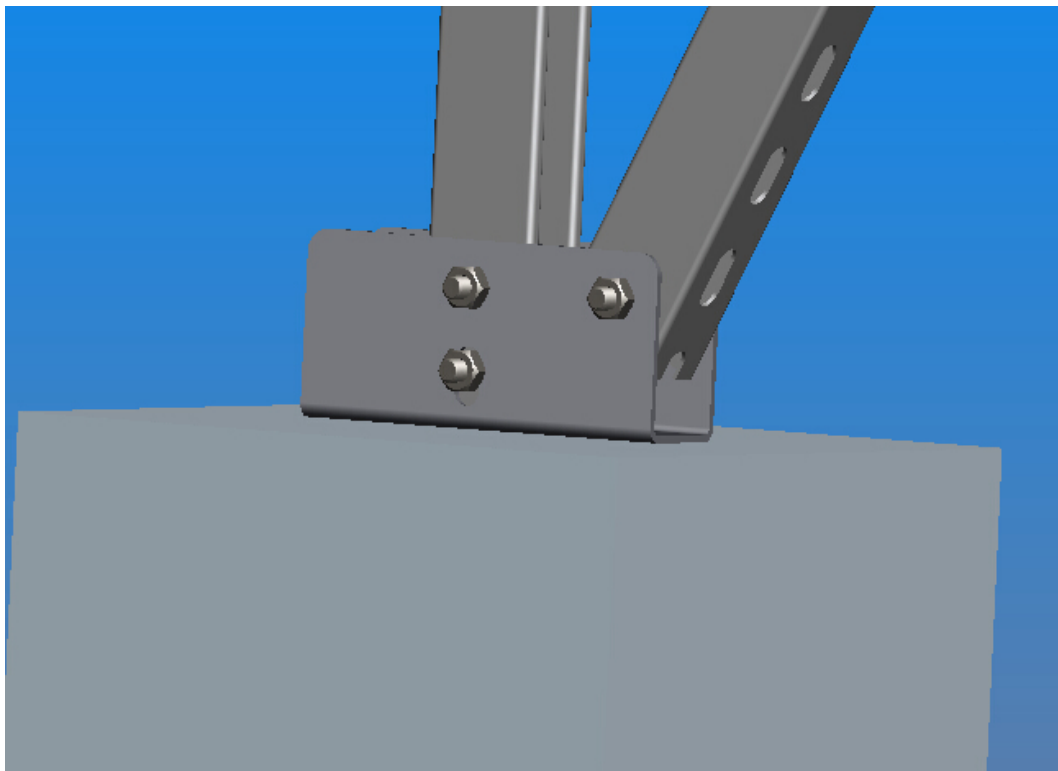
## 安装步骤:

### 1. 安装螺栓和底座:

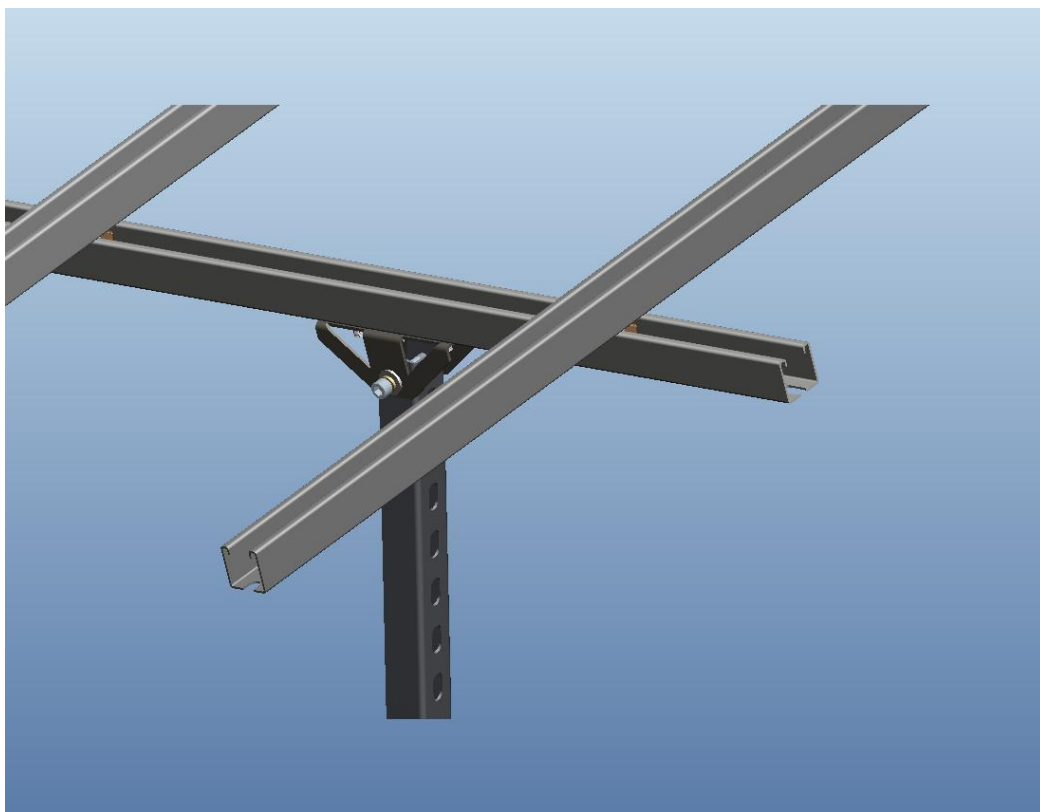


### 3. 安装立柱

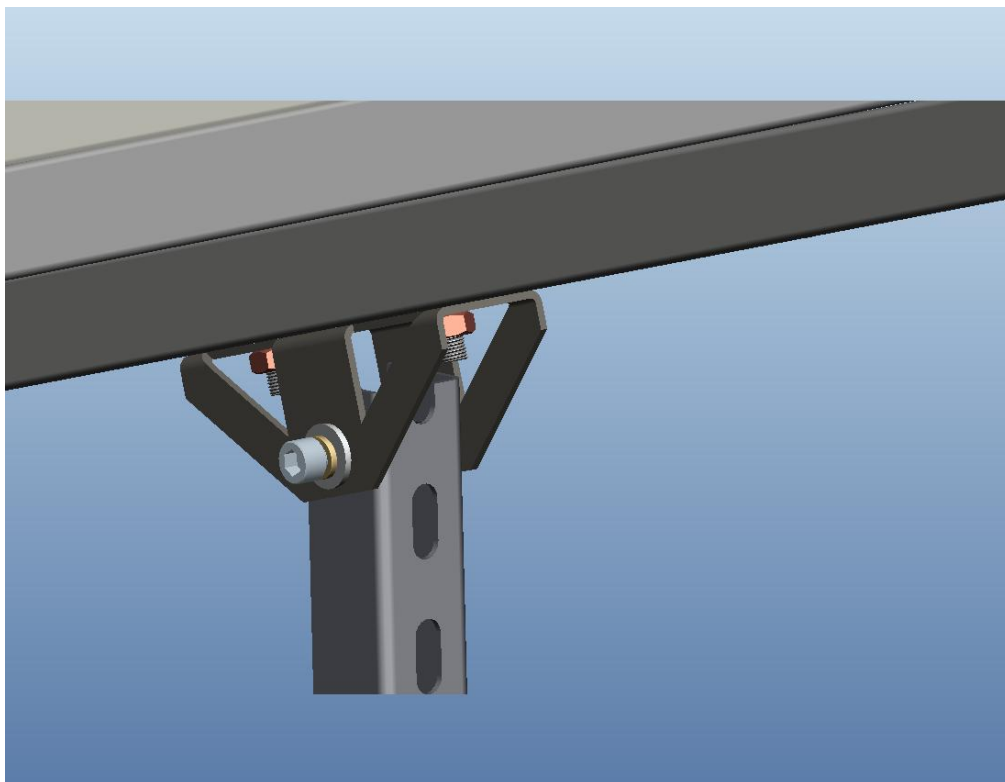




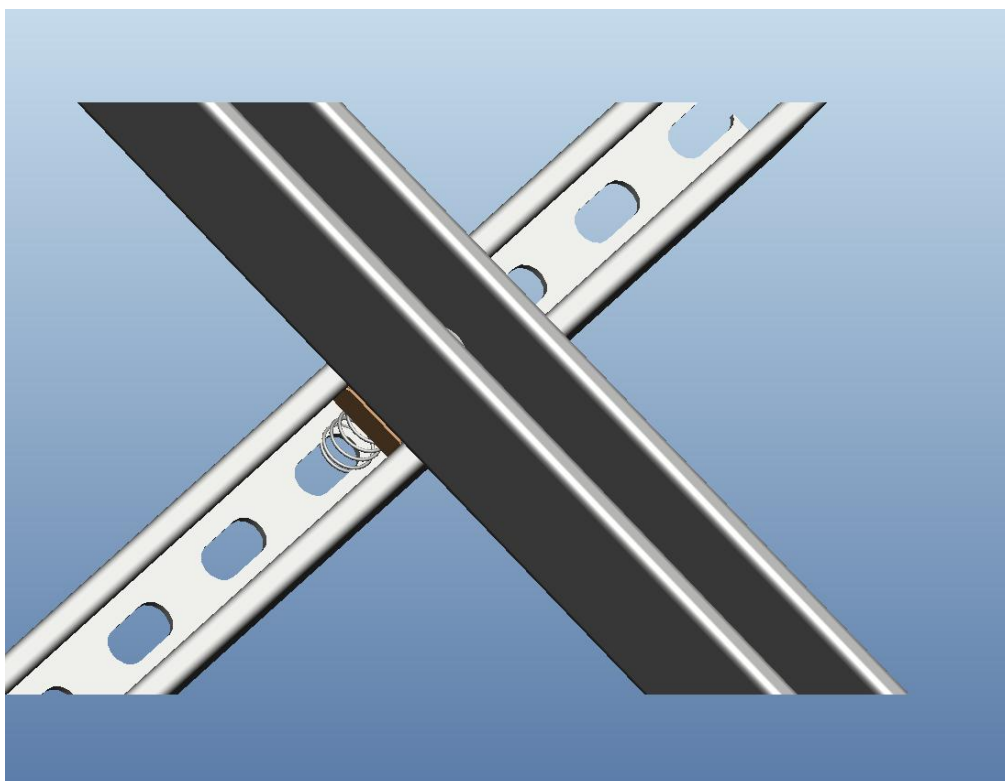
### 3.安装斜梁:



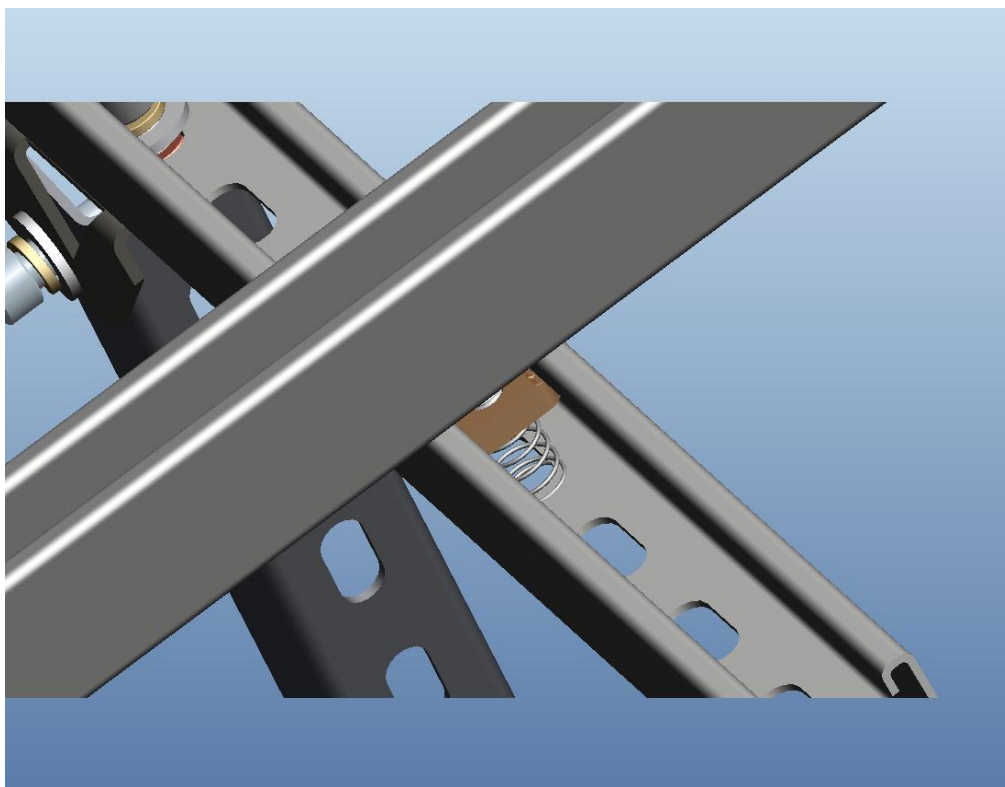
注意：用铰接头连接斜梁和立柱



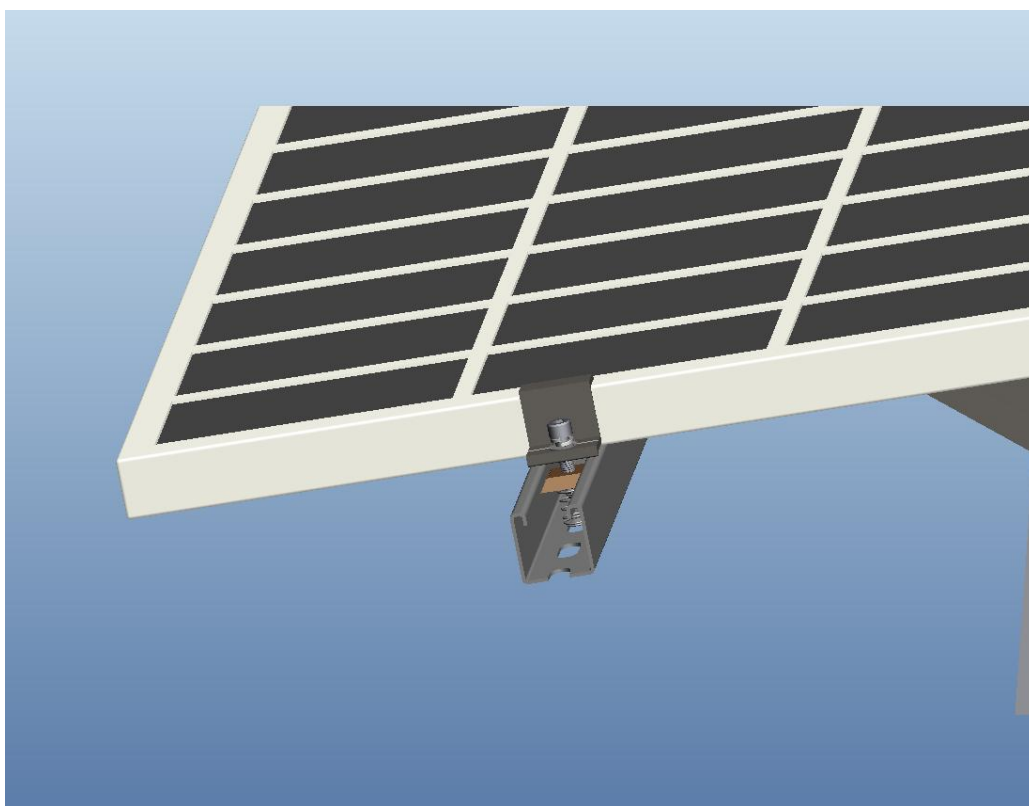
#### 4. 安装导轨



注意：用弹簧卡快连接斜梁和导轨

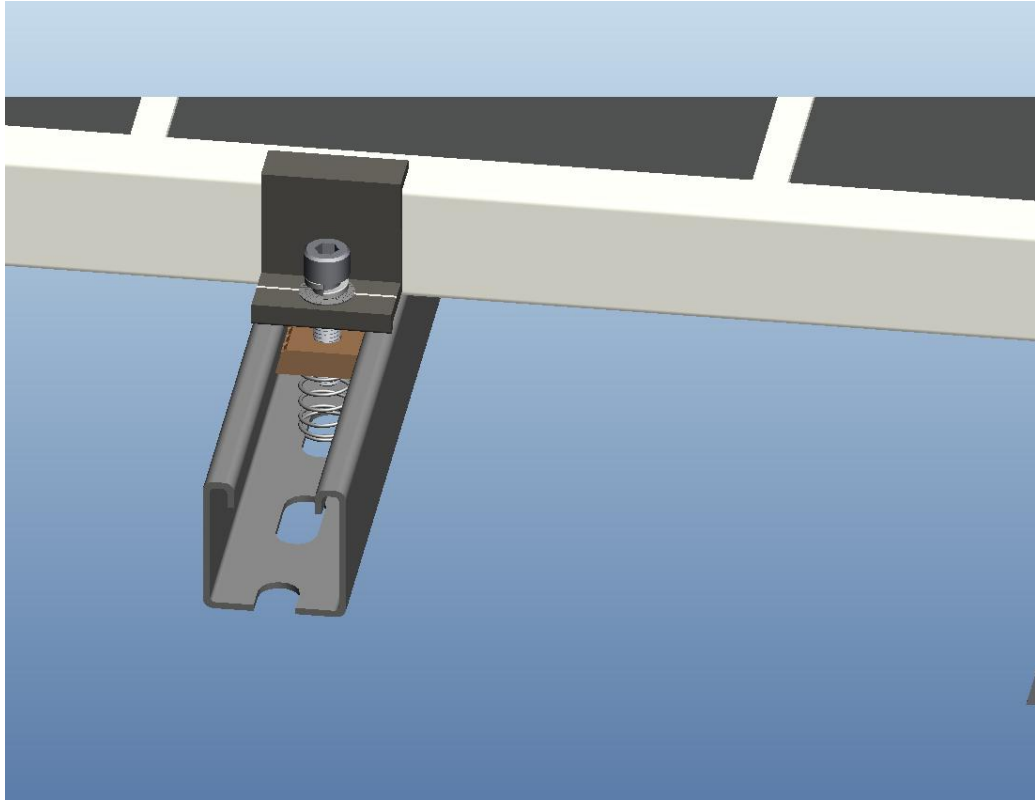


## 5. 安装侧压

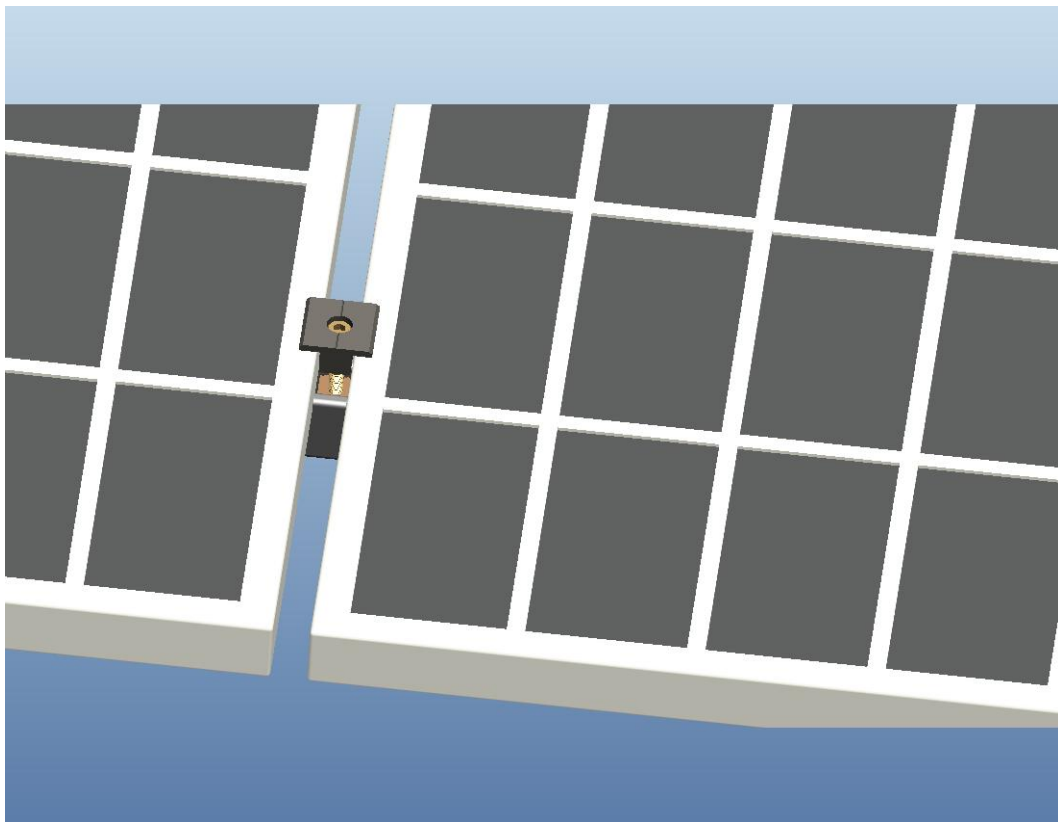


Details:

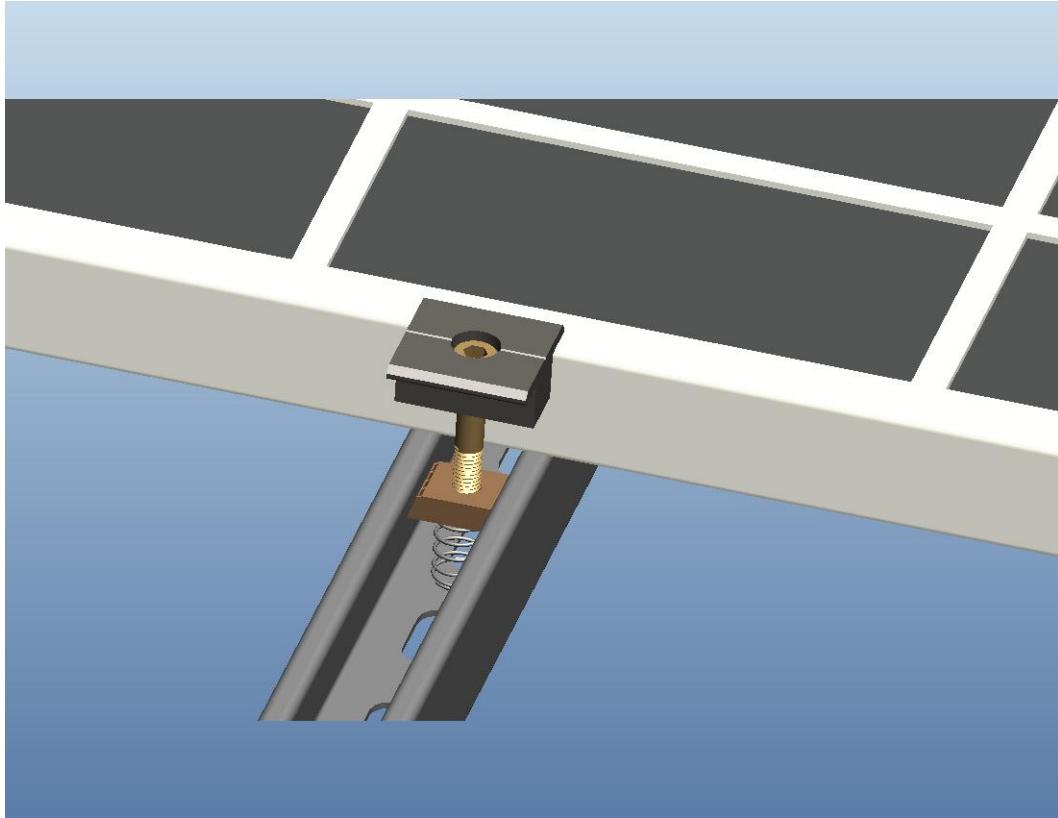
用侧压和弹簧卡快把板固定在导轨上



#### 6. 安装中压:



用中压和弹簧卡快把板固定在导轨上。



安装完之后的图片:

